

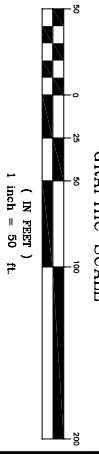


# CORNERSTONE SUBDIVISION, PART ONE

## SUBDIVISION, PART 4

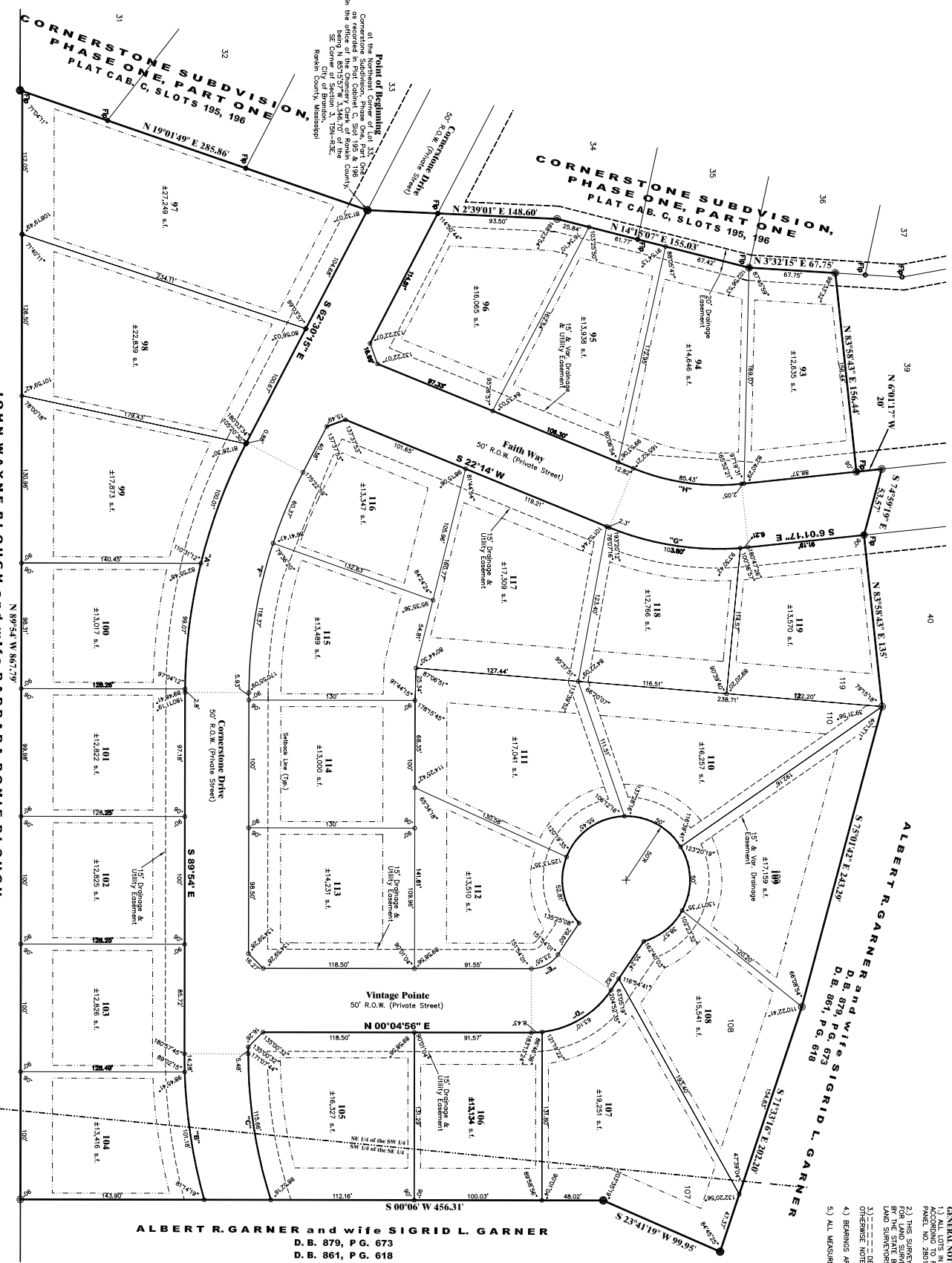
Situated in the SW 1/4 of the SE 1/4 and the SE 1/4 of the SW 1/4 of Section 3, T5N-R3E, Rankin County, Mississippi

Section 3, T5N-R3E, Rankin County, Mississippi



**NORTH**  
 GRAPHIC SCALE

- GENERAL NOTES:**
- 1) ALL LOTS IN THIS SUBDIVISION ARE LOCATED IN FLOOD ZONE "X". THE SUBDIVISION IS SUBJECT TO THE FLOODING REGULATIONS OF THE MISSISSIPPI DEPARTMENT OF TRANSPORTATION AND CONSTRUCTION. PANEL NO. 280143 0211 E. EFFECTIVE DATE: NOVEMBER 5, 2003.
  - 2) THIS SURVEY MEETS THE MANUAL REQUIREMENTS OF THE STANDARDS FOR LAND SURVEYORS IN MISSISSIPPI FOR CLASS B SURVEYS AS ADOPTED BY THE STATE BOARD OF REGISTRATION FOR PROFESSIONAL ENGINEERS AND SURVEYORS.
  - 3) EASEMENTS DENOTES 15' DRAINAGE & UTILITY EASEMENTS UNLESS OTHERWISE NOTED.
  - 4) BEARINGS ARE BASED ON SOLAR OBSERVATION.
  - 5) ALL MEASUREMENTS OF CURVES ARE CHORD LENGTH DISTANCES.

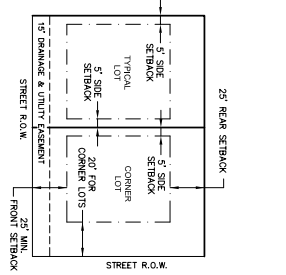


JOHN WAYNE BLOUGH and wife BARBARA BONIE BLOUGH  
 D.B. 440, P.G. 66

**ALBERT R. GARNER and wife SIGRID L. GARNER**  
 D.B. 879, P.G. 673  
 D.B. 861, P.G. 618

**MATHEMATICAL CLOSURES:**

Figure Name	Course	Distance
Cornerstone Subdivision, Part 4	N 14° 15' 07" E	148.60
	S 82° 30' 15" E	155.03
	N 19° 01' 49" E	285.86
	N 14° 15' 07" E	155.03
	S 82° 30' 15" E	155.03
	N 19° 01' 49" E	285.86
	N 14° 15' 07" E	155.03
	S 82° 30' 15" E	155.03
	N 19° 01' 49" E	285.86
	N 14° 15' 07" E	155.03
<b>Perimeter: 2891.79</b>		
11.51 acres		
Magnetic Course = (True) listed course & COCO (Unit)		
Federal Meridian = 90°01'55"		
Course: N 31°-27'-59" W		



TYPICAL LOT SETBACKS

**R.O.W. CURVE DATA**

Stationing	Delta	Radius	Chord	Chord Angle	Delta	Radius	Chord	Chord Angle
Sta=0+00.00	174.432°	100.00	100.00	174.432°	174.432°	100.00	100.00	174.432°
Sta=0+100.00	174.432°	100.00	100.00	174.432°	174.432°	100.00	100.00	174.432°
Sta=0+200.00	174.432°	100.00	100.00	174.432°	174.432°	100.00	100.00	174.432°
Sta=0+300.00	174.432°	100.00	100.00	174.432°	174.432°	100.00	100.00	174.432°
Sta=0+400.00	174.432°	100.00	100.00	174.432°	174.432°	100.00	100.00	174.432°
Sta=0+500.00	174.432°	100.00	100.00	174.432°	174.432°	100.00	100.00	174.432°
Sta=0+600.00	174.432°	100.00	100.00	174.432°	174.432°	100.00	100.00	174.432°
Sta=0+700.00	174.432°	100.00	100.00	174.432°	174.432°	100.00	100.00	174.432°
Sta=0+800.00	174.432°	100.00	100.00	174.432°	174.432°	100.00	100.00	174.432°
Sta=0+900.00	174.432°	100.00	100.00	174.432°	174.432°	100.00	100.00	174.432°
Sta=1+000.00	174.432°	100.00	100.00	174.432°	174.432°	100.00	100.00	174.432°
Sta=1+100.00	174.432°	100.00	100.00	174.432°	174.432°	100.00	100.00	174.432°
Sta=1+200.00	174.432°	100.00	100.00	174.432°	174.432°	100.00	100.00	174.432°
Sta=1+300.00	174.432°	100.00	100.00	174.432°	174.432°	100.00	100.00	174.432°
Sta=1+400.00	174.432°	100.00	100.00	174.432°	174.432°	100.00	100.00	174.432°
Sta=1+500.00	174.432°	100.00	100.00	174.432°	174.432°	100.00	100.00	174.432°
Sta=1+600.00	174.432°	100.00	100.00	174.432°	174.432°	100.00	100.00	174.432°
Sta=1+700.00	174.432°	100.00	100.00	174.432°	174.432°	100.00	100.00	174.432°
Sta=1+800.00	174.432°	100.00	100.00	174.432°	174.432°	100.00	100.00	174.432°
Sta=1+900.00	174.432°	100.00	100.00	174.432°	174.432°	100.00	100.00	174.432°
Sta=2+000.00	174.432°	100.00	100.00	174.432°	174.432°	100.00	100.00	174.432°
Sta=2+100.00	174.432°	100.00	100.00	174.432°	174.432°	100.00	100.00	174.432°
Sta=2+200.00	174.432°	100.00	100.00	174.432°	174.432°	100.00	100.00	174.432°
Sta=2+300.00	174.432°	100.00	100.00	174.432°	174.432°	100.00	100.00	174.432°
Sta=2+400.00	174.432°	100.00	100.00	174.432°	174.432°	100.00	100.00	174.432°
Sta=2+500.00	174.432°	100.00	100.00	174.432°	174.432°	100.00	100.00	174.432°
Sta=2+600.00	174.432°	100.00	100.00	174.432°	174.432°	100.00	100.00	174.432°
Sta=2+700.00	174.432°	100.00	100.00	174.432°	174.432°	100.00	100.00	174.432°
Sta=2+800.00	174.432°	100.00	100.00	174.432°	174.432°	100.00	100.00	174.432°
Sta=2+900.00	174.432°	100.00	100.00	174.432°	174.432°	100.00	100.00	174.432°
Sta=3+000.00	174.432°	100.00	100.00	174.432°	174.432°	100.00	100.00	174.432°
Sta=3+100.00	174.432°	100.00	100.00	174.432°	174.432°	100.00	100.00	174.432°
Sta=3+200.00	174.432°	100.00	100.00	174.432°	174.432°	100.00	100.00	174.432°
Sta=3+300.00	174.432°	100.00	100.00	174.432°	174.432°	100.00	100.00	174.432°
Sta=3+400.00	174.432°	100.00	100.00	174.432°	174.432°	100.00	100.00	174.432°
Sta=3+500.00	174.432°	100.00	100.00	174.432°	174.432°	100.00	100.00	174.432°
Sta=3+600.00	174.432°	100.00	100.00	174.432°	174.432°	100.00	100.00	174.432°
Sta=3+700.00	174.432°	100.00	100.00	174.432°	174.432°	100.00	100.00	174.432°
Sta=3+800.00	174.432°	100.00	100.00	174.432°	174.432°	100.00	100.00	174.432°
Sta=3+900.00	174.432°	100.00	100.00	174.432°	174.432°	100.00	100.00	174.432°
Sta=4+000.00	174.432°	100.00	100.00	174.432°	174.432°	100.00	100.00	174.432°
Sta=4+100.00	174.432°	100.00	100.00	174.432°	174.432°	100.00	100.00	174.432°
Sta=4+200.00	174.432°	100.00	100.00	174.432°	174.432°	100.00	100.00	174.432°
Sta=4+300.00	174.432°	100.00	100.00	174.432°	174.432°	100.00	100.00	174.432°
Sta=4+400.00	174.432°	100.00	100.00	174.432°	174.432°	100.00	100.00	174.432°
Sta=4+500.00	174.432°	100.00	100.00	174.432°	174.432°	100.00	100.00	174.432°
Sta=4+600.00	174.432°	100.00	100.00	174.432°	174.432°	100.00	100.00	174.432°
Sta=4+700.00	174.432°	100.00	100.00	174.432°	174.432°	100.00	100.00	174.432°
Sta=4+800.00	174.432°	100.00	100.00	174.432°	174.432°	100.00	100.00	174.432°
Sta=4+900.00	174.432°	100.00	100.00	174.432°	174.432°	100.00	100.00	174.432°
Sta=5+000.00	174.432°	100.00	100.00	174.432°	174.432°	100.00	100.00	174.432°
Sta=5+100.00	174.432°	100.00	100.00	174.432°	174.432°	100.00	100.00	174.432°
Sta=5+200.00	174.432°	100.00	100.00	174.432°	174.432°	100.00	100.00	174.432°
Sta=5+300.00	174.432°	100.00	100.00	174.432°	174.432°	100.00	100.00	174.432°
Sta=5+400.00	174.432°	100.00	100.00	174.432°	174.432°	100.00	100.00	174.432°
Sta=5+500.00	174.432°	100.00	100.00	174.432°	174.432°	100.00	100.00	174.432°
Sta=5+600.00	174.432°	100.00	100.00	174.432°	174.432°	100.00	100.00	174.432°
Sta=5+700.00	174.432°	100.00	100.00	174.432°	174.432°	100.00	100.00	174.432°
Sta=5+800.00	174.432°	100.00	100.00	174.432°	174.432°	100.00	100.00	174.432°
Sta=5+900.00	174.432°	100.00	100.00	174.432°	174.432°	100.00	100.00	174.432°
Sta=6+000.00	174.432°	100.00	100.00	174.432°	174.432°	100.00	100.00	174.432°
Sta=6+100.00	174.432°	100.00	100.00	174.432°	174.432°	100.00	100.00	174.432°
Sta=6+200.00	174.432°	100.00	100.00	174.432°	174.432°	100.00	100.00	174.432°
Sta=6+300.00	174.432°	100.00	100.00	174.432°	174.432°	100.00	100.00	174.432°
Sta=6+400.00	174.432°	100.00	100.00	174.432°	174.432°	100.00	100.00	174.432°
Sta=6+500.00	174.432°	100.00	100.00	174.432°	174.432°	100.00	100.00	174.432°
Sta=6+600.00	174.432°	100.00	100.00	174.432°	174.432°	100.00	100.00	174.432°
Sta=6+700.00	174.432°	100.00	100.00	174.432°	174.432°	100.00	100.00	174.432°
Sta=6+800.00	174.432°	100.00	100.00	174.432°	174.432°	100.00	100.00	174.432°
Sta=6+900.00	174.432°	100.00	100.00	174.432°	174.432°	100.00	100.00	174.432°
Sta=7+000.00	174.432°	100.00	100.00	174.432°	174.432°	100.00	100.00	174.432°
Sta=7+100.00	174.432°	100.00	100.00	174.432°	174.432°	100.00	100.00	174.432°
Sta=7+200.00	174.432°	100.00	100.00	174.432°	174.432°	100.00	100.00	174.432°
Sta=7+300.00	174.432°	100.00	100.00	174.432°	174.432°	100.00	100.00	174.432°
Sta=7+400.00	174.432°	100.00	100.00	174.432°	174.432°	100.00	100.00	174.432°
Sta=7+500.00	174.432°	100.00	100.00	174.432°	174.432°	100.00	100.00	174.432°
Sta=7+600.00	174.432°	100.00	100.00	174.432°	174.432°	100.00	100.00	174.432°
Sta=7+700.00	174.432°	100.00	100.00	174.432°	174.432°	100.00	100.00	174.432°
Sta=7+800.00	174.432°	100.00	100.00	174.432°	174.432°	100.00	100.00	174.432°
Sta=7+900.00	174.432°	100.00	100.00	174.432°	174.432°	100.00	100.00	174.432°
Sta=8+000.00	174.432°	100.00	100.00	174.432°	174.432°	100.00	100.00	174.432°
Sta=8+100.00	174.432°	100.00	100.00	174.432°	174.432°	100.00	100.00	174.432°
Sta								