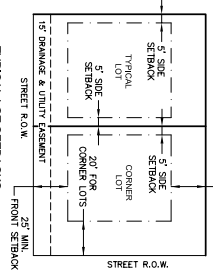


NORTH
GRAPHIC SCALE
(IN FEET)
1 inch = 50 ft.

- GENERAL NOTES:
- 1) ALL LOTS IN THIS SUBDIVISION ARE LOCATED IN FLOOD ZONE "X" ACCORDING TO FLOOD INSURANCE RATE MAP NO. 28121C0211E, COMMUNITY PANEL NO. 280143 0211 E, EFFECTIVE DATE: NOVEMBER 5, 2003.
 - 2) THIS SURVEY MEETS THE MINIMUM REQUIREMENTS OF THE STANDARDS FOR THE STATE BOARD OF REGISTRATION FOR PROFESSIONAL ENGINEERS AND LAND SURVEYORS.
 - 3) --------- DEDICATES 15' DRAINAGE & UTILITY EASEMENTS UNLESS OTHERWISE NOTED.
 - 4) BEARINGS ARE BASED ON SOLAR OBSERVATION.
 - 5) ALL MEASUREMENTS OF CURVES ARE CHORD LENGTH DISTANCES.
 - 6) 25' REAR SETBACK.

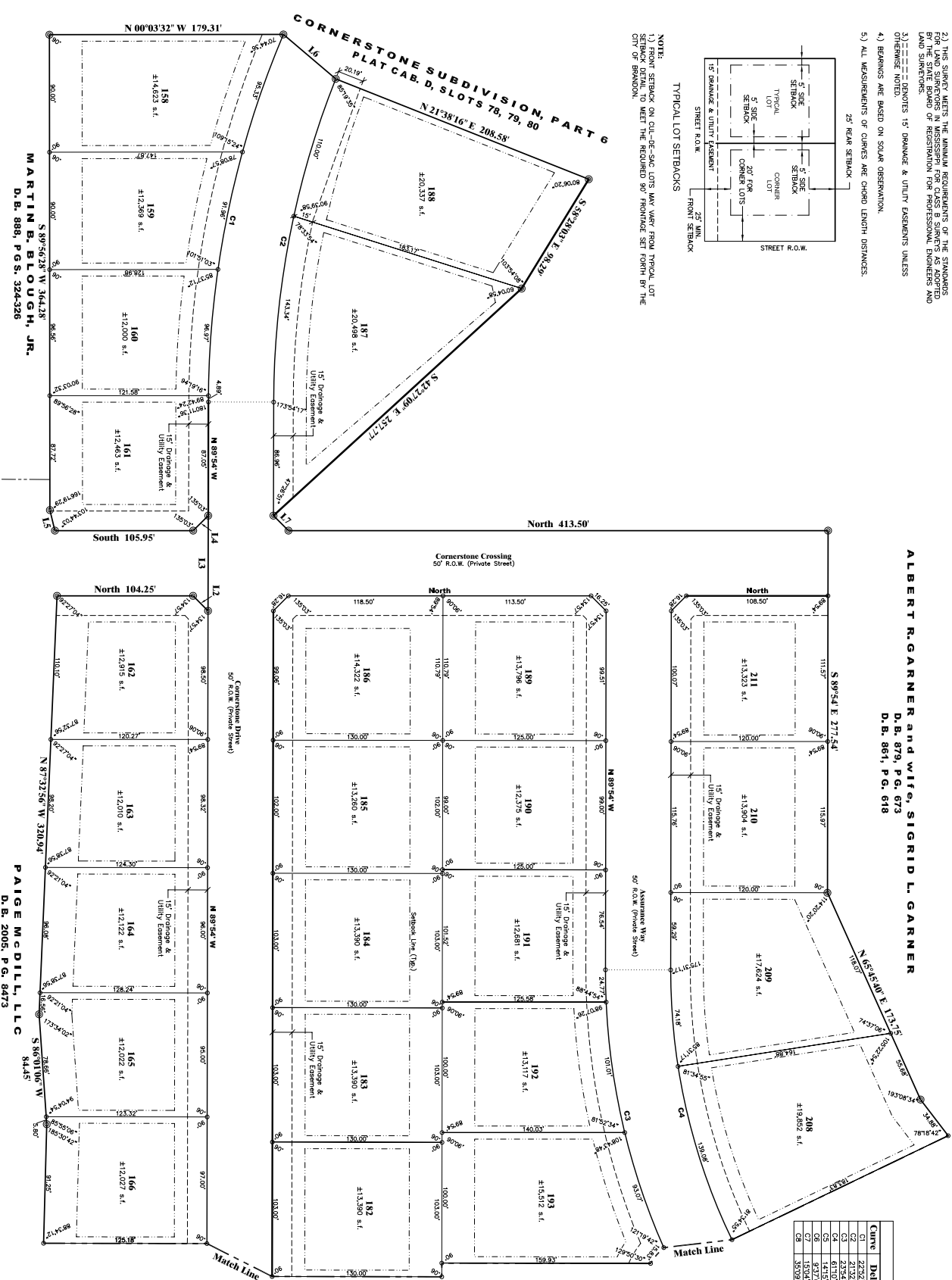


NOTE:
1) FRONT SETBACK ON OIL-GE-SIG LOTS MAY VARY FROM TYPICAL LOT SETBACK DETAIL TO MEET THE REQUIRED 90' FRONTAGE SET FORTH BY THE CITY OF BRANDON.

CORNERSTONE SUBDIVISION, PART 7

Stuated in the SE 1/4 of Section 3 and the SW 1/4 of the SW 1/4 of Section 2, T5N, R3E,
City of Brandon, Rankin County, Mississippi

ALBERT R. GARNER and wife, SIGRID L. GARNER
D.B. 879, P.G. 673
D.B. 861, P.G. 618



RO.W. CURVE DATA

Curve	Delta	Length	Radius	Tangent	Chord	Ch. Brg.
C1	2252.037'	2888.36'	725.007'	148.635'	287.444'	S 78°27.95' E
C2	2326.466'	2934.14'	735.000'	148.388'	287.222'	S 78°28.25' E
C3	2326.466'	2934.14'	735.000'	148.388'	287.222'	S 78°28.25' E
C4	6110.237'	6071.41'	4725.000'	280.785'	483.400'	N 89°28.04' E
C5	14151.717'	130.627'	5252.000'	65.655'	130.297'	N 88°27.18' E
C6	1524.135'	188.981'	6252.000'	42.882'	85.834'	N 87°24.12' E
C7	1524.135'	188.981'	6252.000'	42.882'	85.834'	N 87°24.12' E
C8	35090.027'	3222.007'	5425.000'	168.295'	317.006'	S 89°04.29' E

BOUNDARY BEARINGS

Line	Bearing	Length
L1	N 85°36.15' W	233.07'
L2	N 45°03.00' E	16.25'
L3	N 89°24.00' W	73.00'
L4	S 45°15.00' E	16.28'
L5	S 45°15.00' E	16.28'
L6	N 40°18.00' E	52.57'
L7	N 45°03.00' E	16.25'
L8	N 89°10.00' E	286.23'
L9	N 89°10.00' E	286.23'
L10	S 43°02.28' W	46.13'
L11	S 34°30.02' E	60.60'

MATHEMATICAL CLOSURE:
Figure Name: Cornerstone, Part 7

Course	Distance
Course: N 89°54'-00" W	Distance: 96.60'
Course: S 89°54'-00" W	Distance: 96.60'
Course: S 89°54'-00" W	Distance: 96.60'
Course: N 89°28'-12" W	Distance: 204.89'
Course: N 89°28'-12" W	Distance: 204.89'
Course: N 87°32'-56" W	Distance: 320.94'
Course: N 87°32'-56" W	Distance: 320.94'
Course: N 00°00'-00" E	Distance: 104.25'
Course: N 00°00'-00" E	Distance: 104.25'
Course: N 89°54'-00" W	Distance: 73.00'
Course: N 89°54'-00" W	Distance: 73.00'
Course: S 44°57'-00" E	Distance: 162.85'
Course: S 44°57'-00" E	Distance: 162.85'
Course: S 76°15'-52" W	Distance: 16.18'
Course: S 76°15'-52" W	Distance: 16.18'
Course: N 00°00'-00" E	Distance: 173.72'
Course: N 00°00'-00" E	Distance: 173.72'
Course: N 00°03'-32" W	Distance: 179.31'
Course: N 00°03'-32" W	Distance: 179.31'
Course: S 42°21'-08" E	Distance: 201.27'
Course: S 42°21'-08" E	Distance: 201.27'
Course: S 86°28'-03" E	Distance: 98.29'
Course: S 86°28'-03" E	Distance: 98.29'
Course: N 52°57'-07" E	Distance: 124.88'
Course: N 52°57'-07" E	Distance: 124.88'
Course: N 81°04'-23" E	Distance: 179.57'
Course: N 81°04'-23" E	Distance: 179.57'
Course: N 89°10'-08" E	Distance: 286.73'
Course: N 89°10'-08" E	Distance: 286.73'
Course: N 30°28'-14" E	Distance: 53.83'
Course: N 30°28'-14" E	Distance: 53.83'
Course: S 46°35'-23" E	Distance: 203.32'
Course: S 46°35'-23" E	Distance: 203.32'
Course: S 01°30'-47" E	Distance: 245.60'
Course: S 01°30'-47" E	Distance: 245.60'
Course: S 00°05'-34" E	Distance: 130.00'
Course: S 00°05'-34" E	Distance: 130.00'
Course: S 34°30'-02" E	Distance: 60.60'
Course: S 34°30'-02" E	Distance: 60.60'
Course: S 89°51'-22" W	Distance: 454.03'
Course: S 89°51'-22" W	Distance: 454.03'

Area: 1026385.41
Perimeter: 5317.17
2304 acres
Press any key for menu...
Error of Closure: 0.011'
Precision: 11.462830547
Course: S 79°-38'-27" E