

# CORNERSTONE SUBDIVISION, PART 8B

Situated in the NW 1/4 of the SE 1/4 and the SW 1/4 of the SE 1/4 and the SE 1/4 of the SE 1/4 of Section 3, T5N, R3E, City of Brandon, Rankin County, Mississippi

PLAT CABINET \_\_\_\_\_, SLOT \_\_\_\_\_



### GENERAL NOTES:

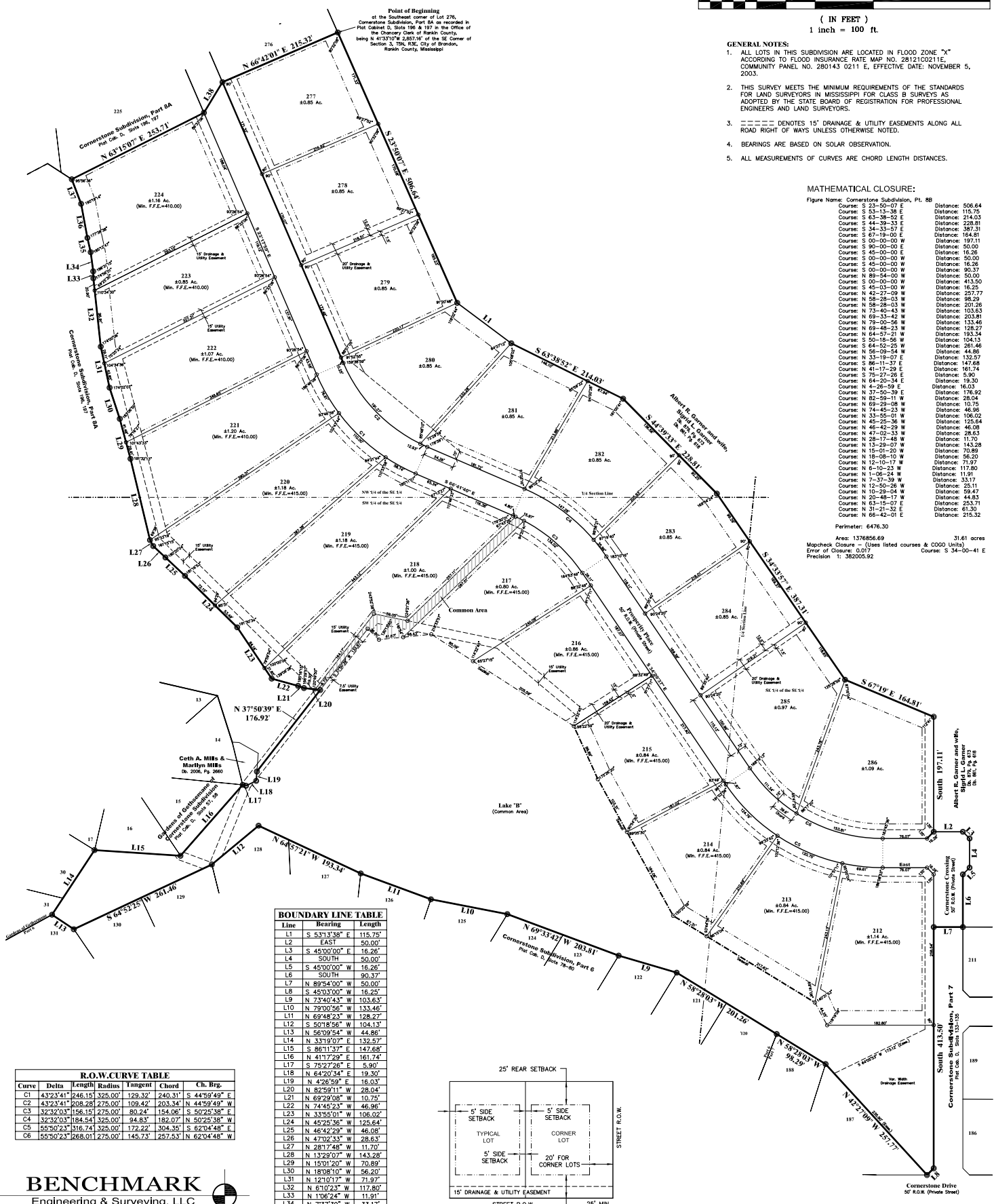
- ALL LOTS IN THIS SUBDIVISION ARE LOCATED IN FLOOD ZONE "X" ACCORDING TO FLOOD INSURANCE RATE MAP NO. 28121C021E, COMMUNITY PANEL NO. 280143 0211 E, EFFECTIVE DATE: NOVEMBER 5, 2003.
- THIS SURVEY MEETS THE MINIMUM REQUIREMENTS OF THE STANDARDS FOR LAND SURVEYORS IN MISSISSIPPI FOR CLASS B SURVEYS AS ADOPTED BY THE STATE BOARD OF REGISTRATION FOR PROFESSIONAL ENGINEERS AND LAND SURVEYORS.
- DENOTES 15' DRAINAGE & UTILITY EASEMENTS ALONG ALL ROAD RIGHT OF WAYS UNLESS OTHERWISE NOTED.
- BEARINGS ARE BASED ON SOLAR OBSERVATION.
- ALL MEASUREMENTS OF CURVES ARE CHORD LENGTH DISTANCES.

### MATHEMATICAL CLOSURE:

Figure Name: Cornerstone Subdivision, Pt. 8B

Course: S 23-50-07 E	Distance: 506.64
Course: S 53-13-52 E	Distance: 115.76
Course: S 63-38-52 E	Distance: 214.03
Course: S 34-33-57 E	Distance: 226.81
Course: S 67-19-00 E	Distance: 387.31
Course: S 00-00-00 W	Distance: 164.81
Course: S 90-00-00 E	Distance: 197.11
Course: S 45-00-00 E	Distance: 50.00
Course: S 00-00-00 W	Distance: 50.00
Course: S 45-00-00 W	Distance: 16.26
Course: S 00-00-00 W	Distance: 50.00
Course: S 89-54-00 W	Distance: 90.37
Course: S 00-00-00 W	Distance: 50.00
Course: S 45-03-00 W	Distance: 413.50
Course: N 42-27-09 W	Distance: 257.77
Course: S 28-28-03 W	Distance: 86.29
Course: N 73-40-43 W	Distance: 201.26
Course: N 69-33-42 W	Distance: 103.63
Course: N 79-00-56 W	Distance: 133.46
Course: N 69-48-23 W	Distance: 128.27
Course: N 64-57-21 W	Distance: 163.34
Course: S 50-18-56 W	Distance: 104.13
Course: S 64-52-25 W	Distance: 281.46
Course: N 56-09-54 W	Distance: 44.86
Course: N 33-19-07 E	Distance: 132.57
Course: S 86-11-37 E	Distance: 147.68
Course: N 41-17-29 E	Distance: 161.74
Course: S 75-27-36 E	Distance: 5.90
Course: N 64-20-34 E	Distance: 19.30
Course: N 4-26-59 E	Distance: 16.03
Course: N 37-50-39 E	Distance: 176.92
Course: N 82-58-11 W	Distance: 28.04
Course: N 69-29-08 W	Distance: 11.73
Course: N 74-45-23 W	Distance: 46.96
Course: N 33-45-01 W	Distance: 102.02
Course: N 45-25-36 W	Distance: 125.64
Course: N 46-42-29 W	Distance: 46.08
Course: N 47-02-33 W	Distance: 28.63
Course: N 15-01-20 W	Distance: 117.70
Course: N 13-29-07 W	Distance: 143.28
Course: N 18-08-10 W	Distance: 56.20
Course: N 12-10-17 W	Distance: 107.87
Course: N 6-10-23 W	Distance: 117.80
Course: N 1-06-24 W	Distance: 11.91
Course: N 7-37-39 W	Distance: 33.17
Course: N 12-50-26 W	Distance: 25.11
Course: N 10-29-04 W	Distance: 39.47
Course: N 20-48-17 W	Distance: 44.83
Course: N 63-15-07 E	Distance: 253.71
Course: N 31-21-32 E	Distance: 61.30
Course: N 56-42-01 E	Distance: 215.32

Perimeter: 6476.30  
 Area: 137656.69 31.61 acres  
 Mapcheck Closure: (Uses listed courses & COGO Units)  
 Error of Closure: 0.017  
 Precision: 1: 382005.82

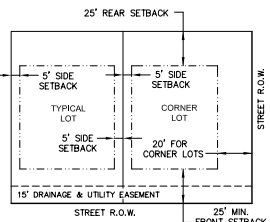


### BOUNDARY LINE TABLE

Line	Bearing	Length
L1	S 53°13'38" E	115.75'
L2	EAST	50.00'
L3	S 45°00'00" E	16.26'
L4	SOUTH	50.00'
L5	S 45°00'00" W	16.26'
L6	SOUTH	90.37'
L7	N 89°54'00" W	50.00'
L8	S 45°00'00" W	16.26'
L9	N 73°40'43" W	103.63'
L10	N 79°00'56" W	133.46'
L11	N 69°48'23" W	128.27'
L12	S 50°18'56" W	104.13'
L13	N 56°09'54" W	44.86'
L14	N 33°19'07" E	132.57'
L15	S 86°11'37" E	147.68'
L16	N 41°17'29" E	161.74'
L17	S 75°27'36" E	5.90'
L18	N 64°20'34" E	19.30'
L19	N 4°26'59" E	16.03'
L20	N 37°50'39" E	176.92'
L21	N 69°29'08" W	11.73'
L22	N 74°45'23" W	46.96'
L23	N 33°45'01" W	102.02'
L24	N 45°25'36" W	125.64'
L25	N 46°42'29" W	46.08'
L26	N 47°02'33" W	28.63'
L27	N 28°17'48" W	117.70'
L28	N 13°29'07" W	143.28'
L29	N 15°01'20" W	70.89'
L30	N 18°08'10" W	56.20'
L31	N 12°10'17" W	71.97'
L32	N 6°10'23" W	117.80'
L33	N 1°06'24" W	11.91'
L34	N 7°37'39" W	33.17'
L35	N 12°50'26" W	25.11'
L36	N 10°29'04" W	39.47'
L37	N 20°48'17" W	44.83'
L38	N 31°21'32" E	61.30'

### R.O.W. CURVE TABLE

Curve	Delta	Length	Radius	Tangent	Chord	Ch. Brg.
C1	43°23'41"	246.15	325.00'	129.32'	240.31'	S 44°59'49" E
C2	43°23'41"	208.28	275.00'	109.42'	203.34'	S 44°59'49" W
C3	32°32'03"	156.15	275.00'	80.74'	154.08'	S 50°25'38" E
C4	32°32'03"	184.54	325.00'	94.83'	182.07'	N 50°25'38" E
C5	55°50'23"	316.74	325.00'	172.22'	304.35'	S 62°04'48" E
C6	55°50'23"	268.01	275.00'	145.73'	257.53'	N 62°04'48" W



**BENCHMARK**  
 Engineering & Surveying, LLC  
 204 Mary Ann Drive, Brandon, Mississippi 39042  
 Office 601-591-1077 • e-mail: benchmarkms@ellsouth.net